

REVISION HISTORY						
ZONE	REV.	BY	DESCRIPTION	DATE	ECO	APPROVAL
	A	WJ	RELEASE FOR PRODUCTION	1/12/10		

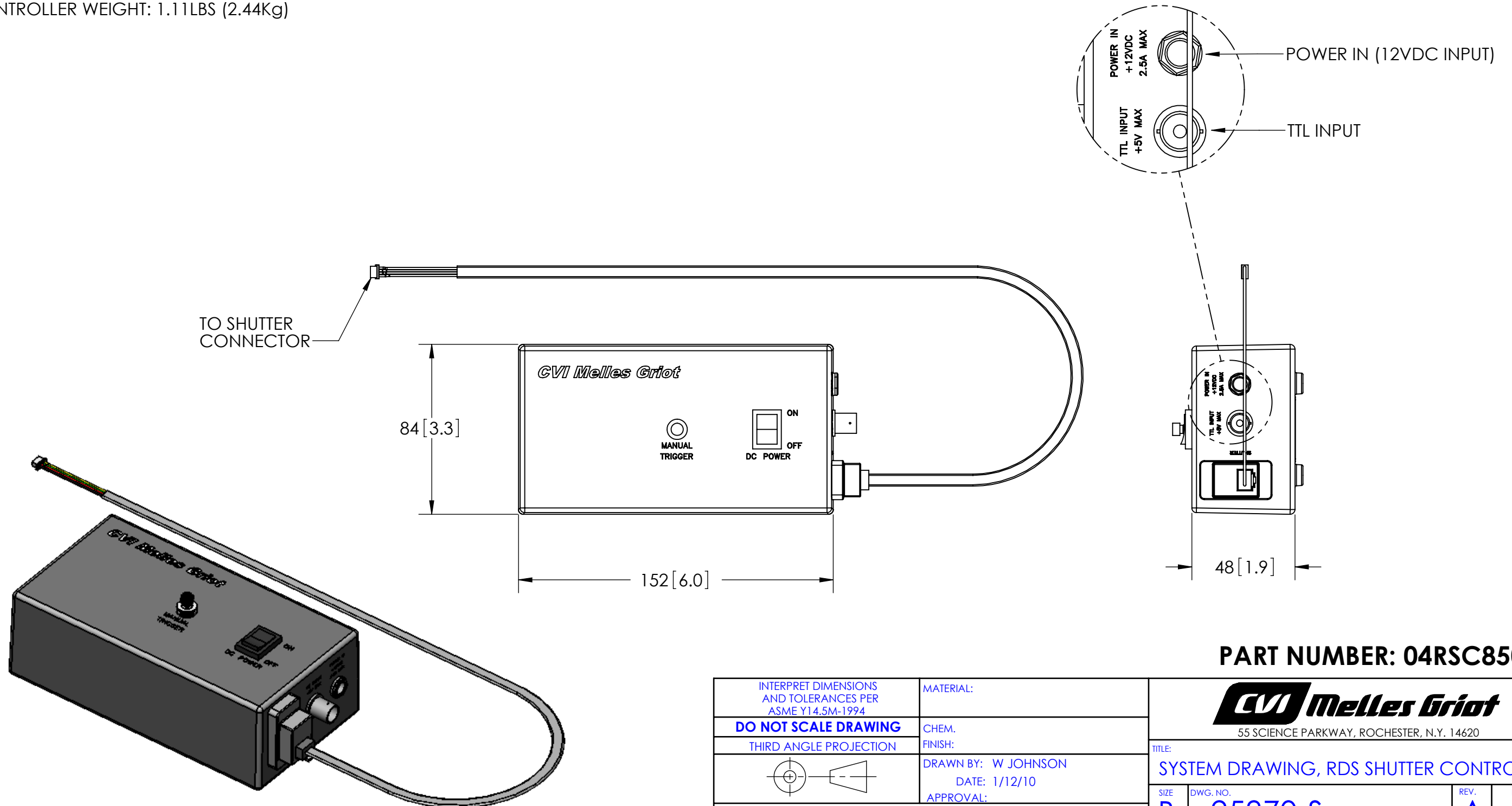
NOTES:

1.0 REFERENCE DOCUMENTATION:

1.1 RDS CONTROLLER OPERATING INSTRUCTIONS: 25873

2.0 DIMENSIONS IN: MILLIMETERS [INCHES]

3.0 CONTROLLER WEIGHT: 1.11LBS (2.44Kg)



**PART NUMBER: 04RSC850**



INTERPRET DIMENSIONS AND TOLERANCES PER ASME Y14.5M-1994	MATERIAL:
<b>DO NOT SCALE DRAWING</b>	CHEM. FINISH:
THIRD ANGLE PROJECTION	DRAWN BY: W JOHNSON DATE: 1/12/10 APPROVAL:
PROPRIETARY NOTICE: THIS DRAWING IS CONFIDENTIAL AND THE INFORMATION THEREON SHALL NOT BE COPIED NOR UTILIZED IN ANY WAY WITHOUT PERMISSION FROM CVI MELLES GRIOT ROCHESTER. DRAWING TO BE RETURNED UPON REQUEST.	

TITLE: <b>SYSTEM DRAWING, RDS SHUTTER CONTROLLER</b>			
SIZE	DWG. NO.	REV.	P NO.
<b>B</b>	<b>25870-S</b>	<b>A</b>	
SCALE: 1:2		SHEET 1 OF 1	