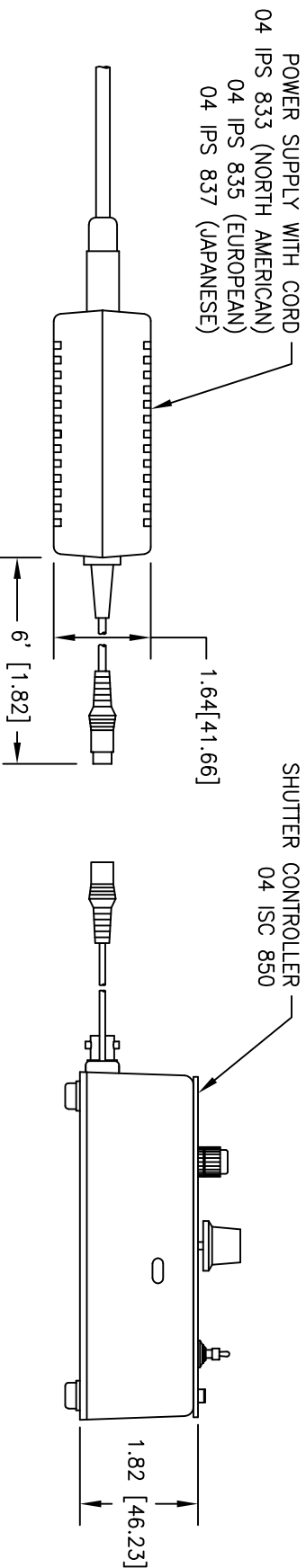
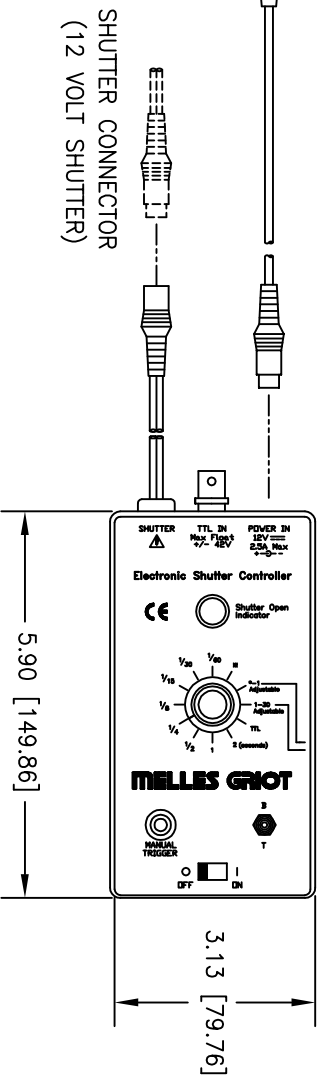
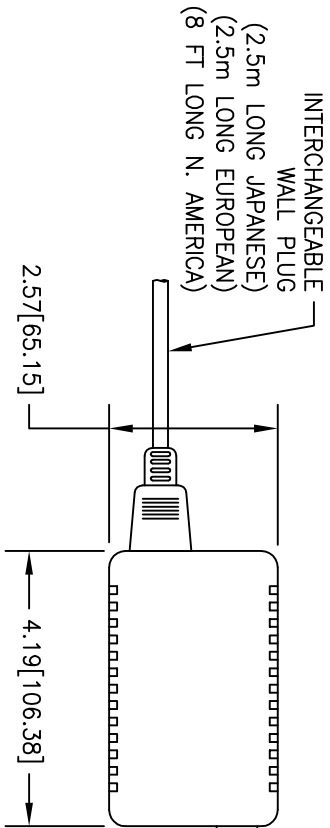


- NOTES:
- 1.0 REFERENCE DOCUMENTATION:
 - 1.1 TROUBLESHOOTING AND SERVICE INSTRUCTIONS: 25151
 - 1.2 OPERATING INSTRUCTIONS: 25152

| REVISION HISTORY | | ZONE | REV | BY | DESCRIPTION | DATE | ECO | APP. BY | DATE |
|------------------|--|------|-----|----|-------------------------|---------|-----|---------|------|
| | | X1 | WU | | PRELIMINARY | 3/9/99 | | | |
| | | A | WU | | RELEASED FOR PRODUCTION | 4/21/99 | | | |
| | | B | WU | | ADDED 1/60 TO FACEPLATE | 8/27/99 | | | 1997 |

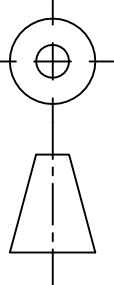


GENERAL NOTES UNLESS OTHERWISE INDICATED ON DOCUMENT:

1. DIMENSIONAL LIMITS APPLY PRIOR TO CHEMICAL FINISH.
2. MAXIMUM ALLOWABLE DIMENSIONAL CHANGE DUE TO CHEMICAL FINISH IS +.0003"/-0 PER SURFACE.
3. BREAK ALL SHARP EDGES .005 x 45°
4. MAX. FILET RADIUS .015
5. SURFACE FINISH: \sqrt{x}

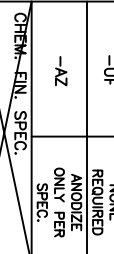
UNLESS OTHERWISE SPECIFIED DIM ARE IN INCHES INTERPRET DIM AND TOL PER ASME Y14.5M - 1994

THIRD ANGLE PROJECTION



CHEMICAL FINISH

| | |
|-----------|--|
| NO SUFFIX | FABRICATE AND ANODIZE PER SPEC BEFORE DELIVERY |
| -UF | NONE REQUIRED |
| -AZ | ANODIZE ONLY PER SPEC. |



MATERIAL:

DATE: 3/9/99

CHECKED BY: _____

DRAFTER: W JOHNSON

DATE: 3/9/99

CHECKED BY: _____

MELLES GRIOT

ROCHESTER
 55 SCIENCE PARKWAY
 ROCHESTER NY 14620

P NO. TITLE:
 SYSTEM DRAWING, CE SHUTTER CONTROLLER W/ P.S.

SIZE DWG. NO. SHEET 1 OF 1

B 25140-S

SCALE: 1/2 PATH: J:\ILEX251\25140A-S.DWG